

Please check the fixtures appearance and report any damages to your retailer immediately.

Set up instructions

1. The Flame 1X is a fire ball spray machine, place the fixture on flat ground ensuring there is 8-meter distance between the machine and any objects, height clearance should be at least 3 meters, the whole space around the fixture should be have not any combustible objects.
2. After placing the machine on the ground, attach the power lead and DMX cable to the machine ensuring the spurt mouth is facing upwards.
3. Use a compatible flame liquid with the fixture. Install the liquid cannister into the machine using the door to access the flame liquid cannister holder. Please speak with your retailer for suggested flame liquids compatible with this fixture.
4. To operate the machine in DMX mode, press the power button up to DMX. If you want to operate the fixture manually then press the power button down, **WARNING:** activating the machine in manual mode can cause injury. It is advisable to use DMX control.



① Pack into liquid



② Please using the regular liquid



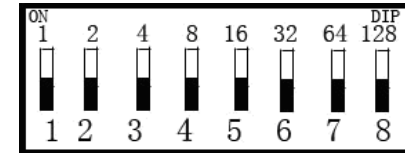
③ Power supply, Please press Power



④ DMX 512: Press to DMX 512 ON/OFF

DMX 512 mode

The address dialing switch is located on the rear of the fixture. Numbers 1 2 3 4 5 6 7 8 in the address dialing switch corresponding with 1 2 4 16 b32 64 128 in DMX 512 controller, use picture below for guidance:



8 Address Dialing Switch

To set the DMX address, toggle the switch up according to the DMX address you wish to set on the fixture.

For example, to set the machine on DMX address 1 push switch No.1 up. To set the machine to DMX address 7 push switch No.1, 2, 3 to up to "ON", this will set the DMX address to "7".

After connecting the DMX 512 controller, push up channel 1 to activate a fire ball action, push up channel 1 and 2 at the same time to create a flame rod action. This product has automatic power-down function after 3 seconds of fire time.

Manual mode

Press down the power button to 'manual', this will activate the flame, this operation is dangerous and can cause injury. This type of spray fire, it can not pass 5sec.)

Technical parameters:

Voltage: AC220V, 10%, 50Hz-60Hz

Fire Height: 1-2m

Power: 200W

Coverage: 1 m³

E:FX[®]

For technical assistance please contact your retailer or our technical team on:

support@efxeurope.com

www.efxeurope.com

E:FX[®]

FLAME 1X

USER MANUAL

FIRE SPRAY MACHINE

(DMX 512)



CE

Please read over this manual before operating the fixture.